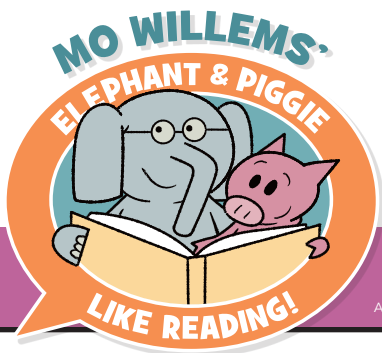


SPOT THE DIFFERENCE!

Circle the six differences between the two pictures.



ANSWERS: 1) Purple character looking up, 2) Orange character's mouth closed, 3) Yellow character's arm is up, 4) Red character's head and arms are down, 5) "Mat" sign is missing, 6) Entire background is white instead of blue.



IT'S A SIGN!

By Jarrett Pumphrey and Jerome Pumphrey

REPRODUCIBLE ACTIVITY SHEET!

Art © Mo Willems. ELEPHANT & PIGGIE is a trademark of The Mo Willems Studio, Inc. / HYPERION BOOKS FOR CHILDREN



MATCHING GAME!

Draw a line to connect each matching character.



IT'S A SIGN!

By Jarrett Pumphrey
and Jerome Pumphrey

REPRODUCIBLE ACTIVITY SHEET!

Art © Mo Willems. ELEPHANT & PIGGIE is a trademark of The Mo Willems Studio, Inc. / HYPERION BOOKS FOR CHILDREN

